



Motorized Cable Reel

Patented Technology

- ✓ Safety
- ✓ Efficiency
- ✓ Ergonomics



AR-C

New Concept in Cable Reel Technology



We are proud to introduce our newest and patented cable reel, called *Assembly Reel AR-C*, a smart cable reel for hand-held tool applications, developed to meet the specific needs and safety regulations of modern assembly factories.

Based on the recommendations from people who know first-hand the risks and frustrations of working in a stumble-jungle, the AssemblyReel AR-C overrules all disadvantages of traditional reel solutions.

Motorized reel system for tool cables

In many factories cables of electric tools remain on the floor during production, creating frustration, tripping hazards and production loss.

Over the years several solutions have been proposed to solve this problem. None, however, have succeeded, and this is exactly where the AssemblyReel AR-C makes the difference!

Intelligent rewind options

Thanks to the I/O receptacle at the back of the reel, several options are available to start the motorized retraction of the tool cable:

- ☑ by using a mushroom push button
- ☑ by using a tool holder with switch
- ☑ by using RF transmitter button
- ☑ by using spare tool button
- ☑ by using tool controller signal



AR-C



The design of the Assembly Reel is as simple and straightforward as it can be. No unnecessary frills! The reel can be mounted on a wall, under a work bench, against the ceiling or even at 45° angle.

Each AssemblyReel comes with an electro-magnetic brake that keeps the tool at grabbing height when not utilised (see cover).

A safety device interrupts the motorized retraction whenever the reel detects unusual resistance on the cable.

The AR-C can be connect to most common electric tool installations:

- ✓ Apex
- ✓ Atlas Copco
- ✓ Bosch
- ✓ Cleco
- ✓ DGD
- ✓ Georges Renault
- ✓ Desoutter
- ✓ Ingersoll-Rand
- ✓ Stanley
- ✓ ...

Certified cable assemblies, specially improved for reel applications, are readily available in any desired length.

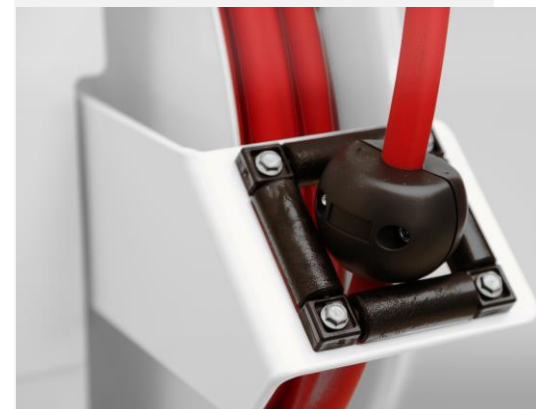
General Features

- Complies with all applicable CE and EMC regulations
- Maintenance free
- No silicone
- High quality components only
- Gold plated connectors and slip ring module
- Trouble-free installation (Plug-n-Play)
- Easy to operate
- Very low and constant unwind force required
- Adjustable retraction speed
- Resistance detection system
- Ridged and straightforward design
- One year warranty

Technical Features

- Power: 24/110/230V
- Drum capacity: 15 m
- Force to unwind manually: ca. 4 Nf
- Static brake capacity: ca. 25 Nf
- Retraction speed: 0.5 - 1.5 m/sec
- Height: 510 mm
- Width: 190 mm
- Depth: 580 mm
- Weight: 29 kg

Visit our website to find more detailed information about this remarkable product.



New Concept in Cable Reel Technology

AR-C



Many accessories are available to optimize the use of AssemblyReel according to your specific needs:

- ✓ Mushroom push buttons
- ✓ Tool holders with switch
- ✓ Pivoting wall brackets
- ✓ Pivoting ceiling brackets
- ✓ Columns with fixtures
- ✓ Compact work benches
- ✓ ...

Your Local AssemblyReel Distributor

ALPHA REEL bvba
Hoogeindekens Unit 8J
9170 Sint-Gillis-Waas
BELGIUM

Phone : 0032 (0)3 744 00 75
Fax : 0032 (0)3 707 00 76
Email : info@alphareel.be



www.assemblyreel.com