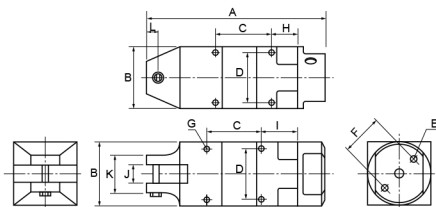


SERIE NS

Dettagli e disegni alla pagina: <http://www.vessel.co.jp/english/product/airnipper/>

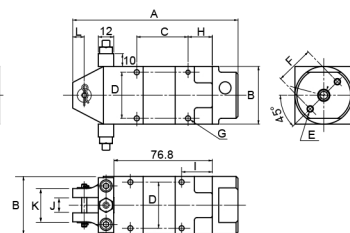


GT-NS



Made-to-order

GT-NS20H-1



Capacità ø (mm)				Modello	Dimensioni (mm)											Consumo aria (cm ³ /str.)	Pressione (MPa)	Peso (g)	Attacco	
Plastica molle	Plastica dura	Rame	Acciaio		A	B	C	D	E	F	G	H	I	J	K					L
2.0		1.0	0.5	GT-NS3	110	23	40	19	M3x8	17	M3x35	19	24	7	23	7	45	0.4~0.5	95	Rc 1/8
2.0		1.0	0.5	GT-NS5	94	30	30	24	M4x10	20	M3x5	14	19	7	23	7	64	0.4~0.5	135	
3.0	2.0	1.6	1.0	GT-NS7	113	36	30	28	M4x10	24	M4x5.5	18	23	9	23	7	116	0.4~0.5	215	
4.0	2.6	1.8	1.2	GT-NS10L	113	36	30	28	M4x10	24	M4x5.5	18	23	12	26	7	116	0.5~0.6	215	
7.0	5.0	2.6	2.0	GT-NS20	129	45	40	36	M5x12	30	M4x7	19	24	12	26	9	230	0.5~0.6	370	
10.0	6.5	3.3	2.8	GT-NS30	170	56	60	46	M6x12	40	M5x10	20	30	17	36	15	584	0.5~0.6	685	
7.0	5.0	2.6	2.0	GT-NS20H-1	129	45	40	36	M8x12	30	M4x17	19	24	12	26	9	230	0.5~0.6	455	